



NexSQLBack™

<http://nexlan.com>

Price

\$200 (VAR Discounts Available)

Version Compatibility

All Versions AccountMate
SQL/Express/MSDE

AccountMate LAN Version 7

Source Code Requirement

Source code for your
AccountMate installation
is **NOT** required!

Highlights

- > End-user friendly backup of AccountMate databases.
- > Provides a reference point for restoration in the event of catastrophic data failure.
- > Optional ability to backup the AccountMate system database, AMWSYS.

Few things in your company are more important than the data of your financial management system. And while you're sure you have an automated backup in place, data inside a SQL Server takes special handling to back up - so you need to be SURE it's working! There are also occasions when you need to do a "quick backup" such as before a month or year-end closing or major changes to the data, like before starting a physical inventory count, and the process using the Microsoft SQL Server Management Console can be complex and tedious to the typical end-user.

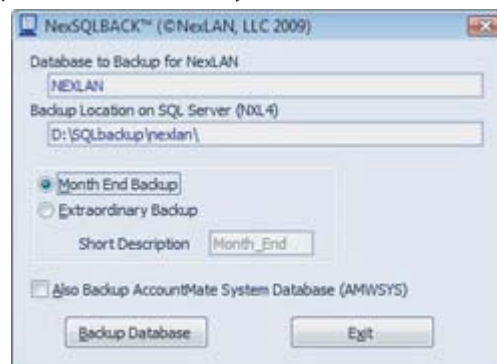
NexSQLBack is an add-on for all versions of AccountMate SQL and SQL/Express (formerly SQL/MSDE), and AccountMate LAN V7 (which uses SQL/Express for the payroll data) to provide a simple graphical user interface to perform a "backup to a file" of the company database and, optionally, the AccountMate system database, AMWSYS, to a local hard drive on your database server.

While not a substitute for regular, automated backups - or a database maintenance plan - NexSQLBack has proven itself a genuine lifesaver in numerous installations as the "snapshot file" created by NexSQLBack is then easily backed up by simple file-based backup programs on your server and provides an excellent reference point for restoration in the event of catastrophic data failure.

Creating a Backup

NexSQLBack is added as an additional option in AccountMate's menu under <Utilities> <Data Manager>, which is only accessible with the "supervisor" password.

The application allows you to select the option of a "month end" backup (which will be automatically named appropriately), or an "extraordinary backup" (which allows you to provide a short descriptive name for the backup). Optionally, you may also backup the AccountMate system database, AMWSYS.



The utility provides informational messages as the process runs, including notification that it's complete.

Please note that the backup location is relative to the drives on your database server (i.e. it's "from the server perspective", as though you were sitting at the server keyboard) and is defined in a configuration file, named NexSQLBack.am, in the root directory of the AccountMate installation.

Also, if you have more than one active company in AccountMate you will need to execute NexSQLBack from each company, in which case the AMWSYS database need only be selected once.